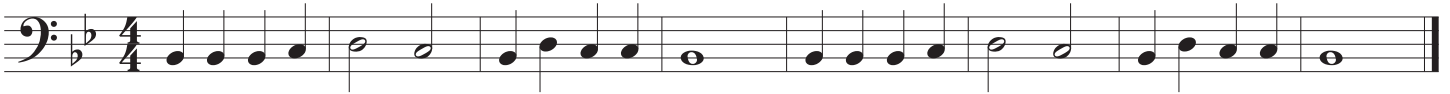


# 5th Grade Area Concert Songs

## Baritone

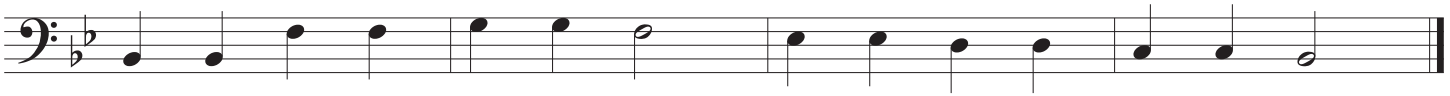
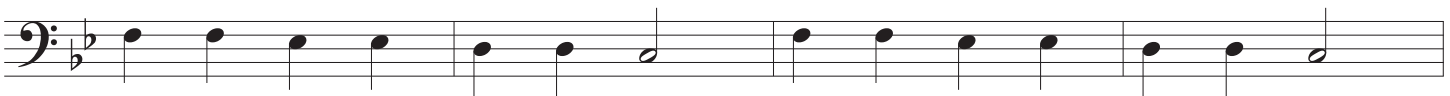
### 1. Claire de Lune



### 2. Aunt Rhodie



### 3. Twinkle, Twinkle Little Star



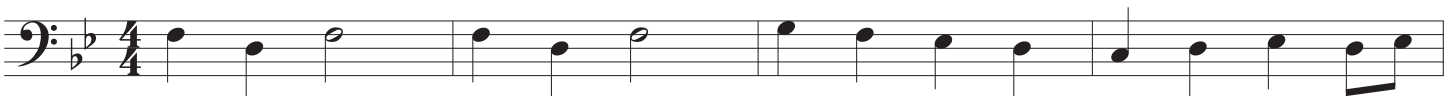
### 4a. Grand March (Melody)



### 4b. Grand March (Harmony)



### 5. This Old Man



6. Ode to Joy

Musical score for 'Ode to Joy' in bass clef, 4/4 time, key of B-flat major. The score consists of four staves. The first staff begins with a treble clef and a 4/4 time signature. The melody is composed of quarter and eighth notes, with a final half note. The second and third staves provide accompaniment with similar rhythmic patterns. The fourth staff concludes the piece with a double bar line.

7. When the Saints Go Marching In

Musical score for 'When the Saints Go Marching In' in bass clef, 4/4 time, key of B-flat major. The score consists of three staves. The first staff begins with a treble clef and a 4/4 time signature. The melody features a series of quarter notes with rests. The second and third staves provide accompaniment. The third staff includes a first ending (1.) and a second ending (2.) marked with first and second endings symbols.